

# MEETT

**TOULOUSE  
EXHIBITION  
& CONVENTION  
CENTRE**

HAUTE-GARONNE – OCCITANIE – FRANCE

[WWW.MEETT.FR](http://WWW.MEETT.FR)

**TOULOUSE ÉVÉNEMENTS**

PIERRE BAUDIS CONGRESS CENTRE | ESPACES VANEL | MEETT



**VENUES**



**TOULOUSE  
ÉVÉNEMENTS**



# Destination...Toulouse

## Toulouse, a capital city

The capital of the Occitanie Region, Toulouse is a dynamic and attractive European metropolis.


-  **4<sup>th</sup>** largest city in France
-  **1,3** million inhabitants
-  **5** billion/year of R&D investment
-  **3<sup>th</sup>** in the ICCA rankings


## Toulouse, capitale of knowledge

Toulouse is a metropolis of excellence that brings together the talents of both today and tomorrow.

-  **120,000** students
-  **20,000** researchers (including 2,200 healthcare researchers)
-  **World capital** of aeronautics
-  **European space capital**

## Accessible...

 **Toulouse-Blagnac Airport**  
67 international regular flights.  
41 flights daily between Paris and Toulouse.  
France's leading business airport.  
Located 20 minutes from the city centre.

 **Toulouse-Matabiau Station**  
Links to Bordeaux in 2 hours, to Montpellier in 2hrs 15m, to Lyon in 4hrs, to Paris in 4hrs 10m and to Barcelona in 3hrs 12m. Direct connection to the city's bus, metro and tram networks.

## ... and welcoming

 **More than 1,000** restaurants with generous tables

 **14,600** hotel rooms

Let Toulouse inspire you!





© Jour de Nuit - Matthieu Krieger



in partnership with:  
**Agence d'Attractivité Toulouse**



**Toulouse Convention Bureau**  
A team dedicated to making the City easy for you  
+33 (0)5 81 31 30 20 – cvb@toulouseatout.com  
www.meetings-toulouse.com

 @Toulouse\_CVB  @ToulouseCVB



<b>95,000 m<sup>2</sup></b> of complementary spaces	<b>40,000 m<sup>2</sup></b> adjustable into 7 halls	<b>Convention Centre</b> 15,000 m <sup>2</sup>
<b>5,000</b> car park spaces	<b>Outdoor exhibition area</b> 25,000 m <sup>2</sup>	<b>3,400</b> plenary delegates

**ONE SITE - UNIQUE EXPERTISE AND ADAPTABILITY**  
GIVE YOUR EVENTS A BOOST



## TRAVEL TIMES

**MEET > AIRPORT**  
15 min by bus / 7 min by car

**MEET > TOULOUSE ARÈNES**  
35 min by tram / 20 min by car



**ISO 14001 certification: sites that are committed to the environment**  
In order to improve how we manage the impact of our activities on the environment, our sites embarked on an ISO 14001 certification process. This was obtained in February 2013. ISO 14001 is based on an internationally recognised standard for environmental management, and the aim is to continuously and sustainably reduce the environmental impact of our business.

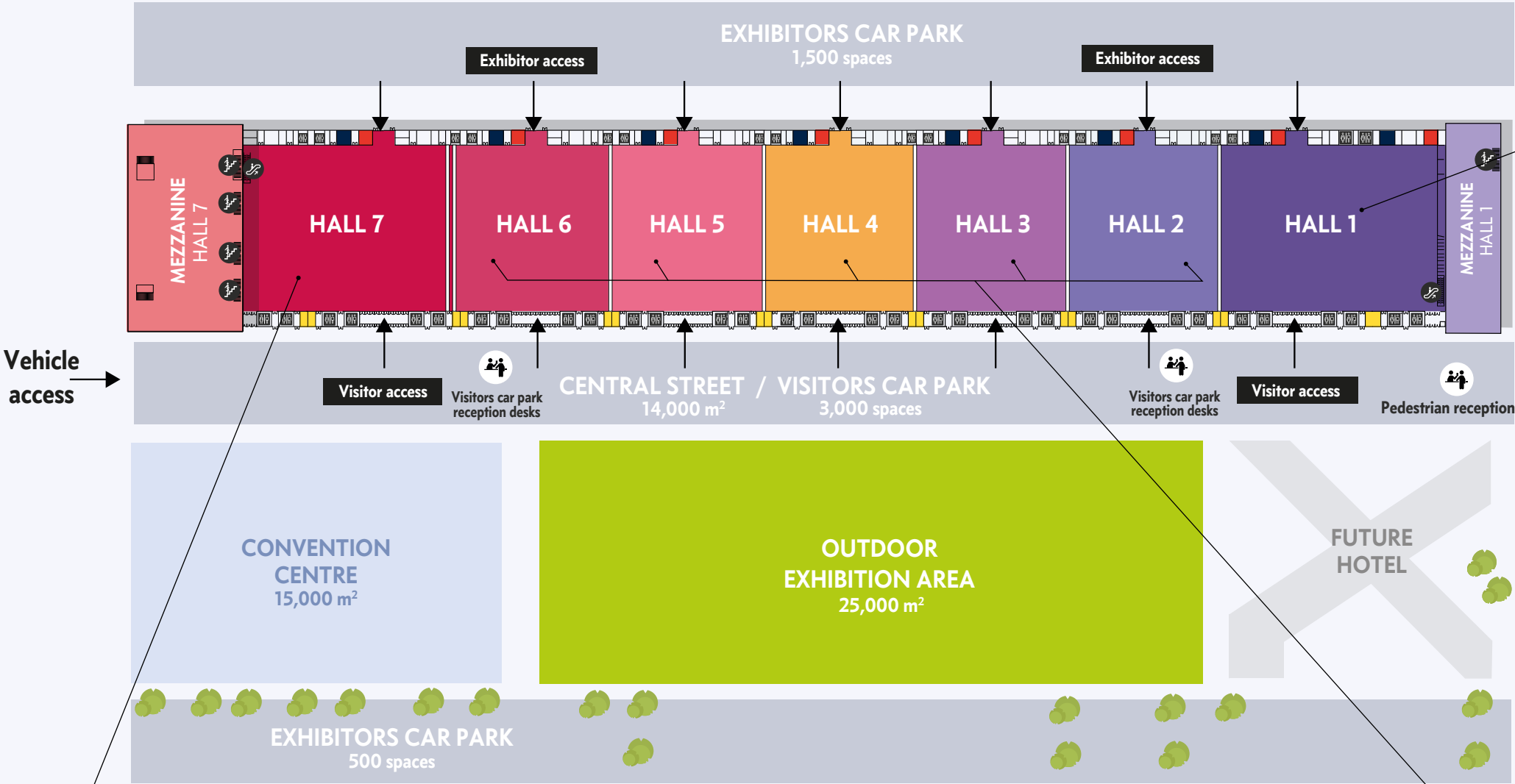
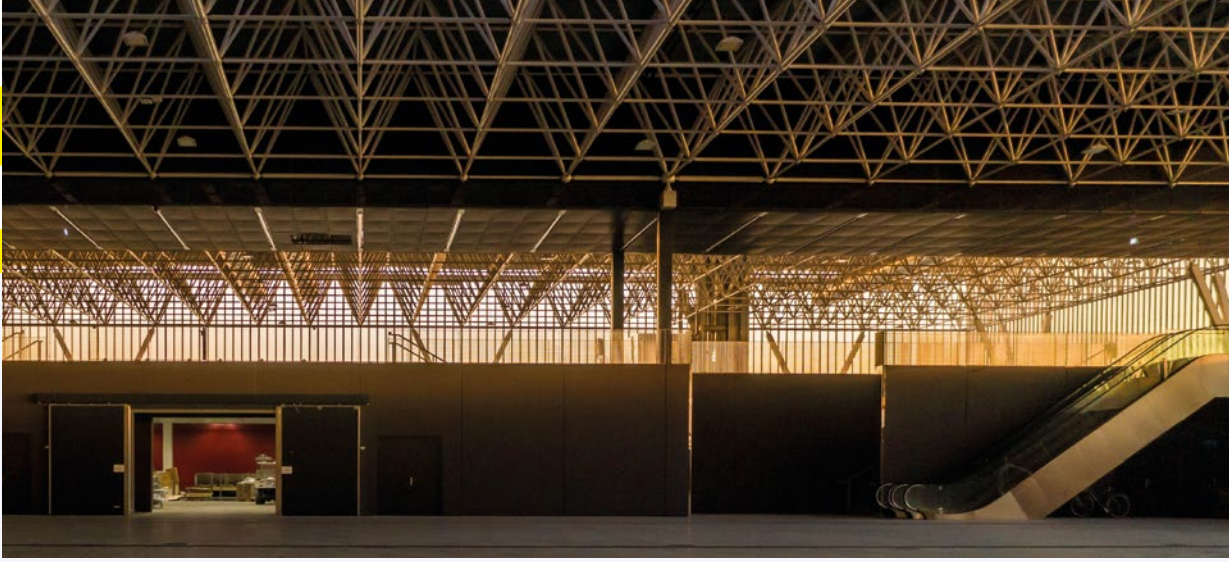
**HQE™ certification**  
HQE™ certification is a French approach relating to construction that aims to limit environmental impact in the short and long term, while enabling a building design that is fit for purpose for the user and environmentally friendly.

**LEED® NC label**  
The LEED® NC label is the most established label at the international level. It picks up on the HQE objectives for buildings and extends them to the immediate environment of the project: reduction in light pollution, alternatives to vehicle use, water-efficient landscaping, waste management, recycling of materials, etc.



# EXHIBITION CENTRE

The Exhibition Centre is one of the largest in France. It has a fully modular 40,000 m<sup>2</sup> exhibition hall divisible into 7 halls and a 14,000 m<sup>2</sup> central street, leading to a 25,000 m<sup>2</sup> outdoor exhibition area. It is also equipped with two mezzanines, bringing real originality and complementarity to the building.



## HALL 1

### MEZZANINE

- Area: 1,455 m<sup>2</sup>
- Length: 20,6 m / Width: 67,7 m
- Ceiling height: 6 m

### EXHIBITION HALL

- Area: 6,170 m<sup>2</sup>
- Outdoor area: 588 m<sup>2</sup>
- Length: 89,75 m / Width: 68,75 m
- Ceiling height: 9 m

- ORGANISING OFFICE 1: 16 m<sup>2</sup>
- ORGANISING OFFICE 2: 16 m<sup>2</sup>
- BAR 1: 33 m<sup>2</sup>
- BAR 2: 31 m<sup>2</sup>
- CATERING OFFICE 1: 34 m<sup>2</sup>
- CATERING OFFICE 2: 35 m<sup>2</sup>
- CATERING STORE: 11 m<sup>2</sup>

## HALL 7

### MEZZANINE

- Area: 3,019 m<sup>2</sup>
- Outdoor area: 111 m<sup>2</sup>
- Length: 36 m / Width: 80,5 m
- Ceiling height: 5,36 m

### EXHIBITION HALL

- Area: 5,915 m<sup>2</sup>
- Outdoor area: 588 m<sup>2</sup>
- Length: 86,04 m / Width: 68,75 m
- Ceiling height: 9 m

- ORGANISING OFFICE 1: 16 m<sup>2</sup>
- ORGANISING OFFICE 2: 16 m<sup>2</sup>
- ORGANISING OFFICE 3: 16 m<sup>2</sup>
- ORGANISING OFFICE 4: 16 m<sup>2</sup>
- BAR: 31 m<sup>2</sup>
- CATERING OFFICE: 35 m<sup>2</sup>

## HALLS 2, 3, 4, 5, 6

### EXHIBITION HALL

- Area: 4,272 m<sup>2</sup>
- Outdoor area: 588 m<sup>2</sup>
- Length: 62,15 m / Width: 68,75 m
- Ceiling height: 9 m

- ORGANISING OFFICE 1: 16 m<sup>2</sup>
- ORGANISING OFFICE 2: 16 m<sup>2</sup>
- BAR: 31 m<sup>2</sup>
- CATERING OFFICE: 35 m<sup>2</sup>
- CATERING STORE: 11 m<sup>2</sup>

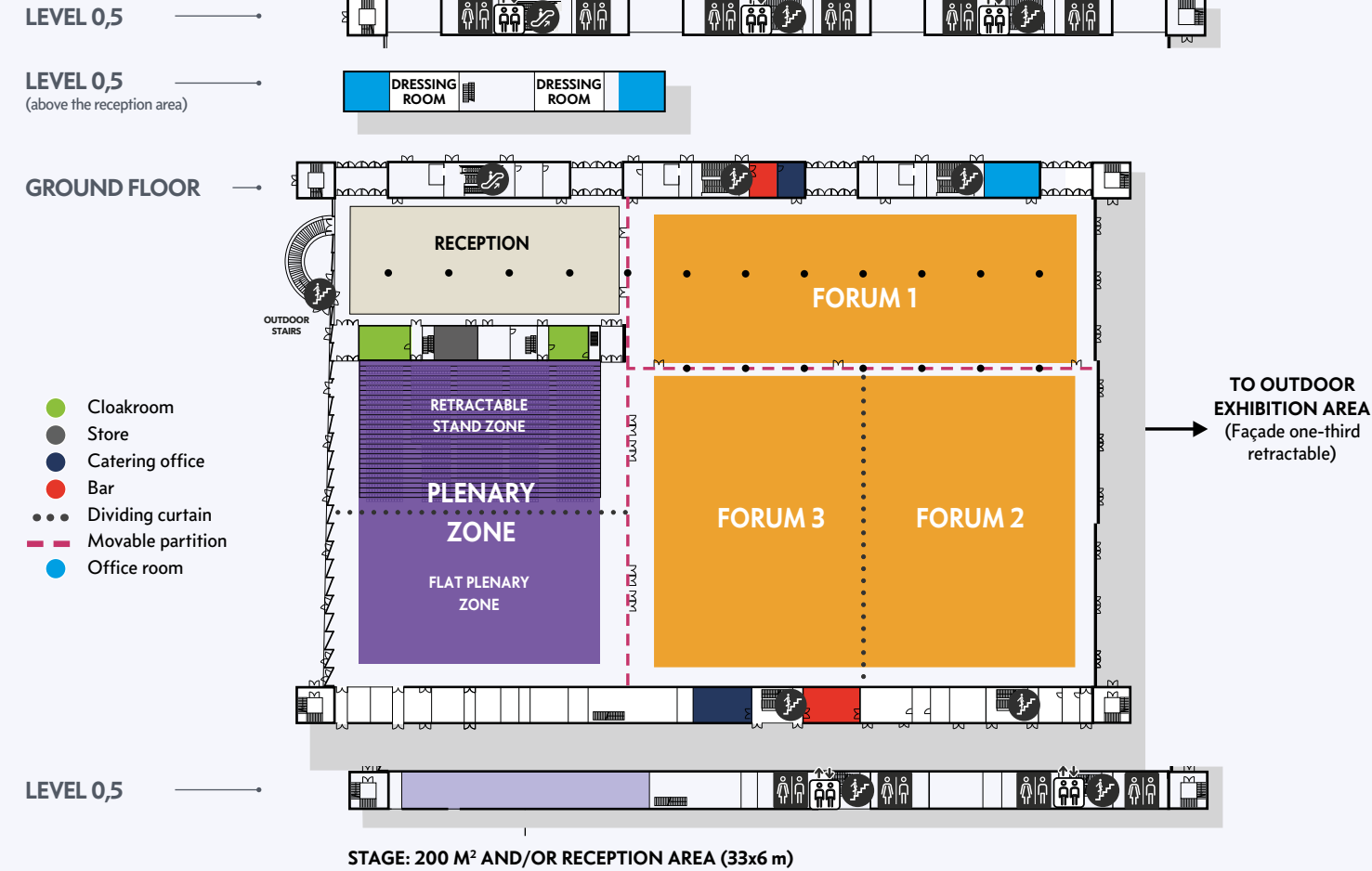


# CONVENTION CENTRE

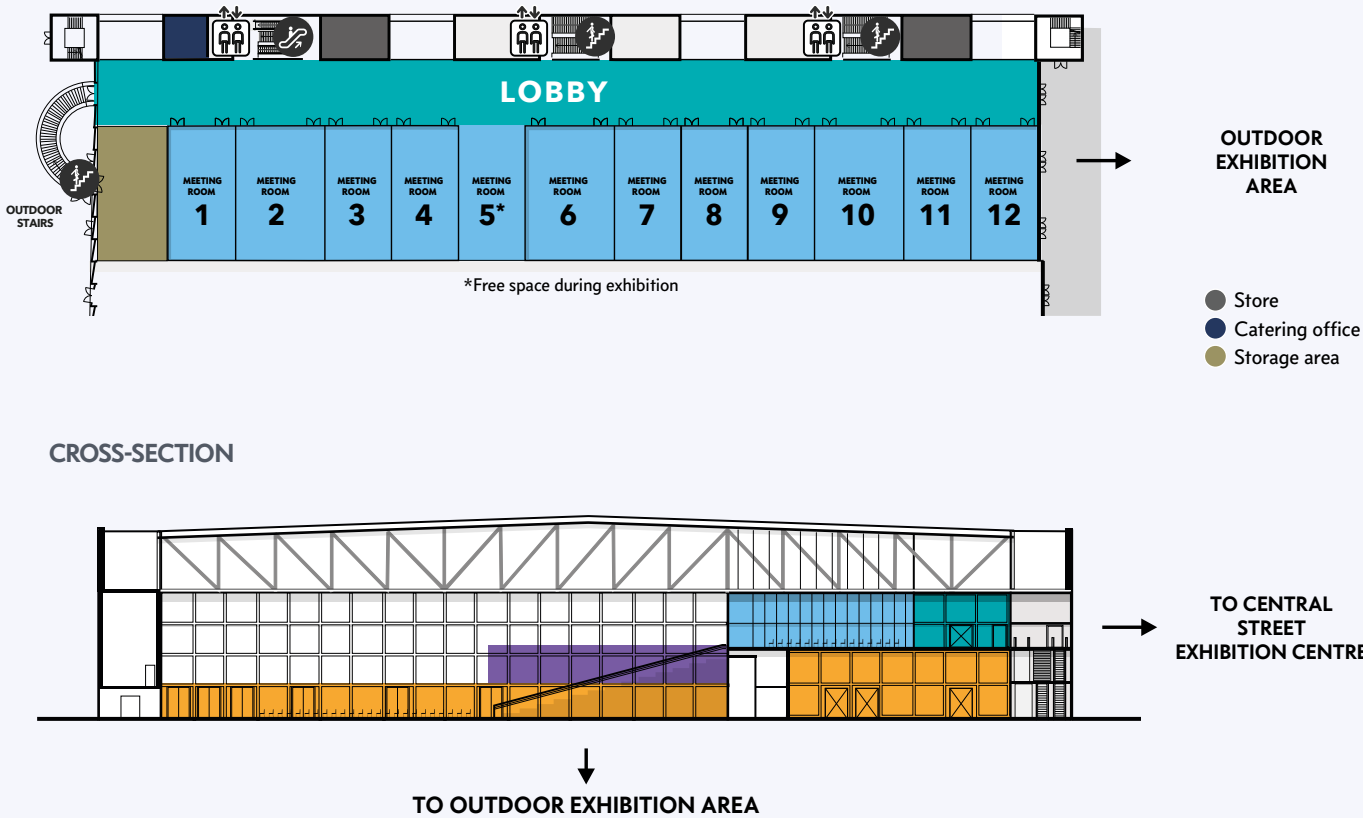
The Convention Centre, on the same site, complements the Exhibition Centre. It is designed on two levels, can accommodate business events for up to 10,000 people. This fully modular venue can accommodate a plenary session at the same time, as well as offering a set-up based on a variety of styles: workshops, catering and exhibitions.



TO THE CENTRAL STREET  
EXHIBITION CENTRE



**LEVEL 1**



## GROUND FLOOR

### Zones

	Area en m <sup>2</sup>		Length en m		Width en m		Ceiling height	Theatre	Round tables (place settings)
RECEPTION AREA	1,244	67,7	20,6	6					
CLOAKROOM 1	56	9,2	6	3,1					
CLOAKROOM 2	43	7,1	6	3,1					
DELEGATE STORAGE	47	7,8	6	3,1					
STAND ZONE	1,785	53,3	33,5	13					
FLAT PLENARY ZONE	1,412	53,3	26,5	13					
FORUM 1	2,598	86,6	30	6	2,340	1,740			
FORUM 2 or 3	2,598	60	43	13	2,340	1,860			
FORUMS 2+3	5,196	86	60	13	4,680	3,720			
FORUMS 1+2+3	7,780	90	86	6/13	7,020	5,460			

## GROUND FLOOR

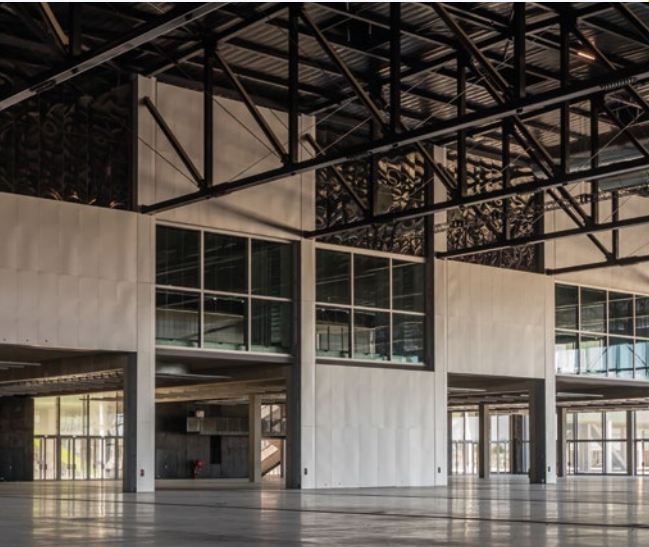
### Plenary capacities

	Total capacities	Flat area	Stands
	744		744
	1,164		1,164
	1,500	1,500	
	1,864		1,864
	2,244	380	1,864
	2,644	800	1,864
	3,364	1,500	1,864

## LEVEL 1

### Zones

	Area en m <sup>2</sup>		Ceiling height		Theatre	U	Classe	Round tables (place settings)	Cocktail
RECEPTION LOBBY	1,395	11,5							
MEETING ROOMS 1, 3, 4, 5, 7, 8, 9, 11, 12	197	5,6	182	54	120	120	200		
MEETING ROOMS 2, 6, 10	262	5,6	240	60	168	160	260		
LEVEL 1 TOTAL	3,954	2,358	666	1,584	1,560	2,580			



## YOUR EVENT

Conference  
Convention  
Trade Fair  
Seminar  
Gala Evening

## OUR SERVICES

- Reception
- Layout & decoration
- Audiovisual equipment
- Exhibiting & general installation
- Cleaning
- CAD/CAM
- Catering
- Security
- Signage
- ICT (fibre optic Internet access, WiFi)

## 3 VENUES 1 DEDICATED TEAM

These complementary locations in the heart of the Toulouse metropolitan area offer modular venues and a single, dedicated point of contact.  
Tél. +33 (0)5 62 25 45 45  
info@toulouse-evenements.com

## TOULOUSE ÉVÉNEMENTS 3 VENUES

IN THE HEART OF METROPOLITAN  
TOULOUSE

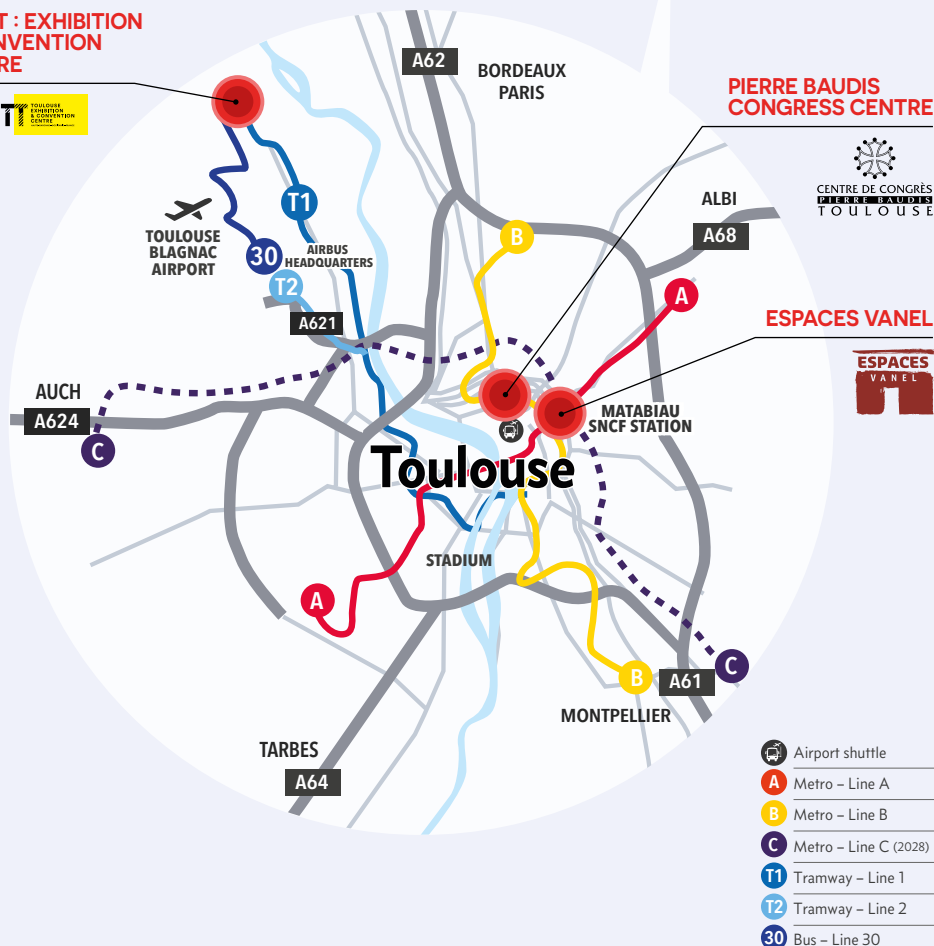
**MEETT : EXHIBITION  
& CONVENTION  
CENTRE**



**PIERRE BAUDIS  
CONGRESS CENTRE**



**ESPACES VANEL**



## 7 GOOD REASONS TO CHOOSE TOULOUSE

- Preferential geographic location
- A city focused on innovation and high technology
- Strong economic attractiveness
- Large, accessible range of accommodation in the Toulouse conurbation
- City of knowledge
- Capital city of the Occitanie Region with an exceptional heritage
- Recognised style of living

## TOULOUSE ÉVÉNEMENTS EXHIBITION & CONVENTION CENTRE: MEETT

Concorde Avenue  
31840 AUSSONNE  
Tél. +33 (0)5 62 25 45 45  
info@toulouse-evenements.com  
[www.toulouse-evenements.com](http://www.toulouse-evenements.com)

